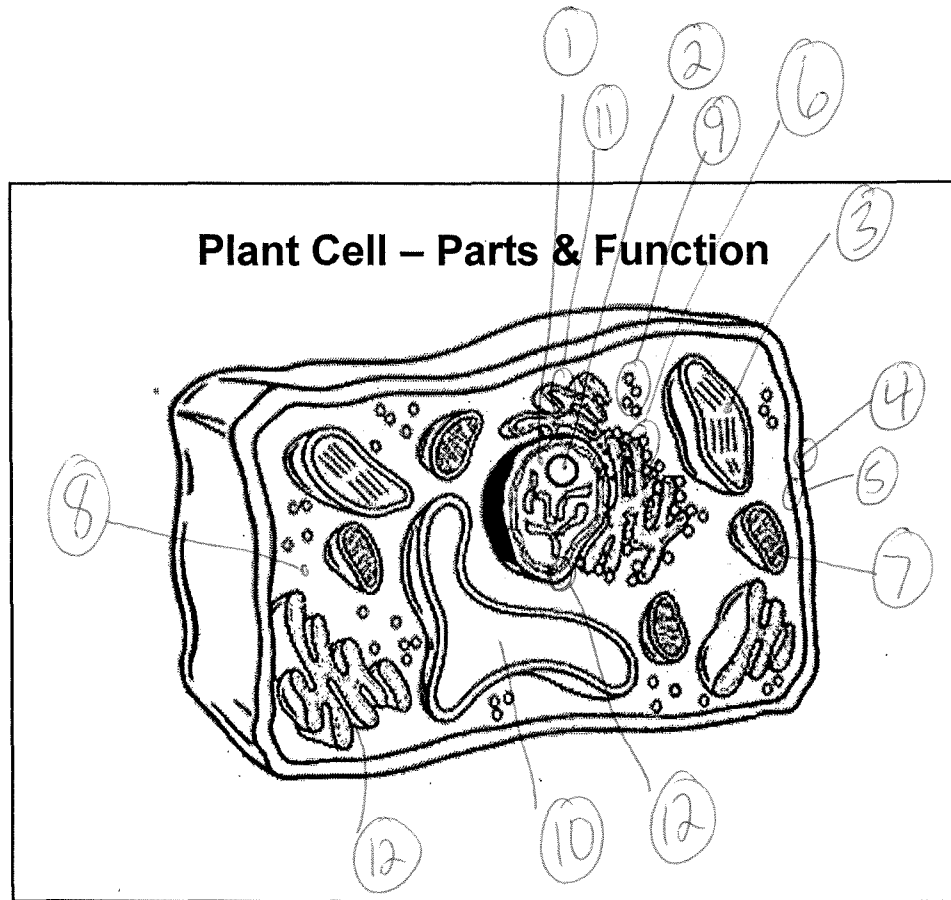


Animal cell - Answers

- | | |
|--------------------------------|------------------------------|
| 1. Vacuole | 8. Lysosome |
| 2. Cell membrane | 9. Golgi apparatus |
| 3. Nucleolus | 10. Mitochondria |
| 4. Nucleus (chromatin) | 11. Smooth ER |
| 5. Ribosomes (attached to RER) | 12. Centrioles (animal only) |
| 6. ER (endoplasmic reticulum) | 13. cytoplasm |
| 7. Nuclear membrane | |



Plant cell - Answers

- | | |
|------------------|----------------------|
| 1. Nucleus | 8. Cytoplasm |
| 2. Nucleolus | 9. Ribosome |
| 3. chloroplast | 10. Vacuole |
| 4. Cell wall | 11. Smooth ER |
| 5. Cell membrane | 12. Golgi body |
| 6. Rough ER | 13. Nuclear membrane |
| 7. Mitochondria | |