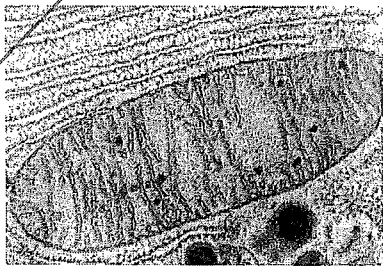
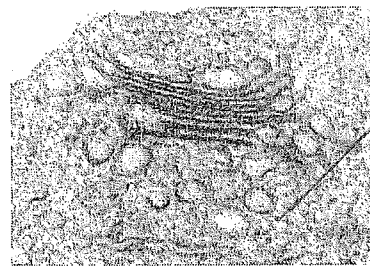


56) Label the cristae and the matrix:

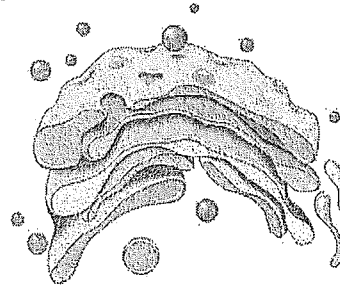
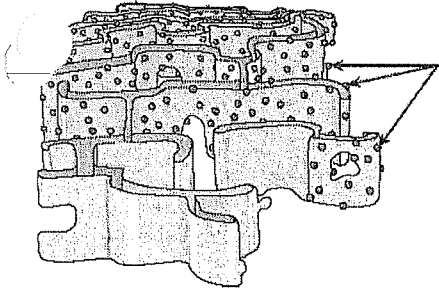


OMIT

Label the vesicles



✓ 57) Identify and label the parts of the following organelles.



✓ 58) State the balanced chemical equation for cellular respiration and explain the significance of the mitochondria in this process.

✓ 59) Describe how the following pairs of organelles function to compartmentalize the cell and move materials through it. Where are proteins made and how are they processed, transported and exported?

a. Rough and Smooth ER

b. Golgi bodies and vesicles and lysosomes

60) Label plasma membrane, mitochondrion, centriole, rough ER, cytoplasm, smooth ER, Golgi body, microfilaments, microtubules, ribosomes, nucleus, nuclear envelope, nuclear pore, nucleolus, chromatin, lysosome

